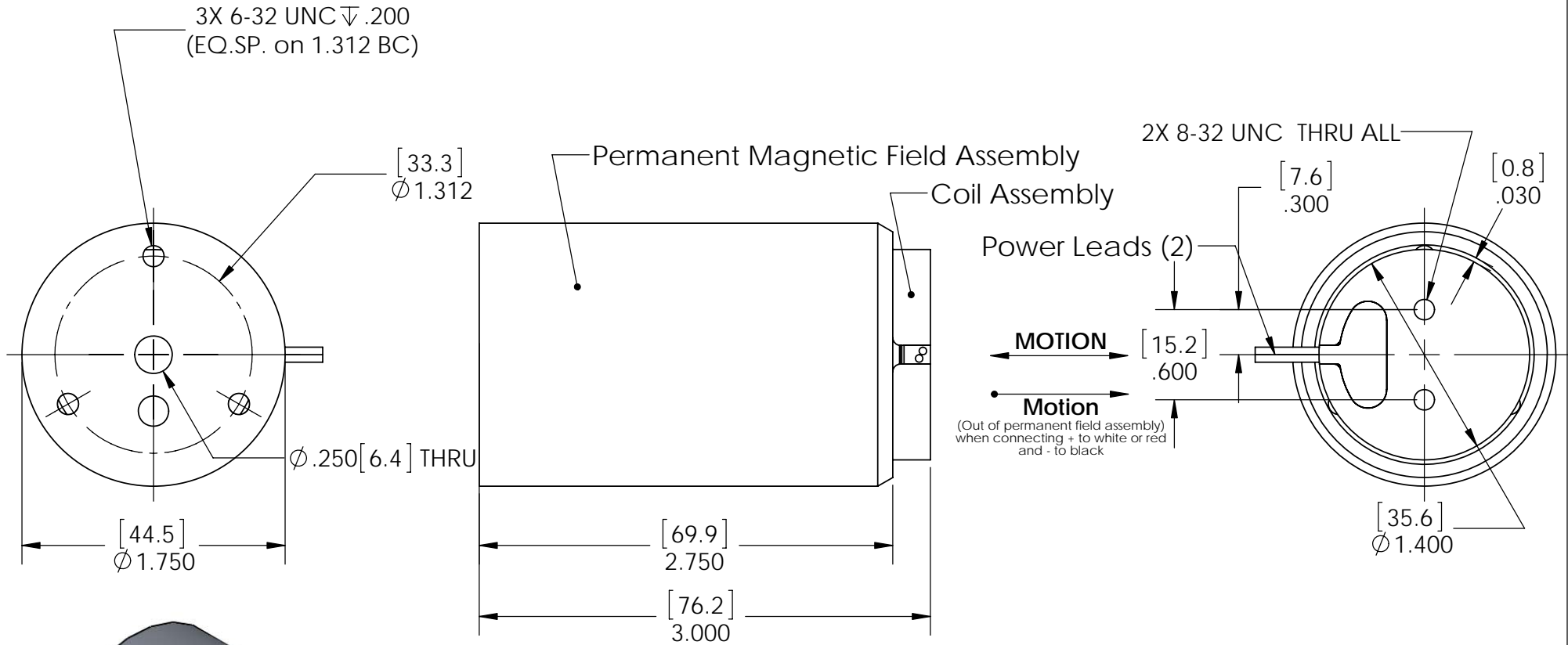
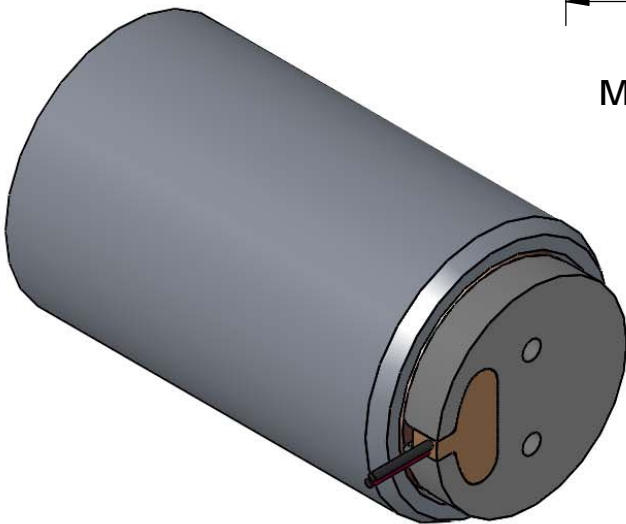


These drawings and specifications are the property of H2W Technologies, Inc. They are issued in confidence and shall not be reproduced, copied, or used without written permission from H2W Technologies, Inc. (www.h2wtech.com)

REVISION TABLE						
REV	ECN#	DESCRIPTION		REV BY	APPROVED	DATE
---	---	Original Drawing		JRM	MPW	10-08-12



**MOTOR SHOWN FULLY RETRACTED**



UNLESS SPECIFIED OTHERWISE: All dimensions are in inches Standard Tolerances are as follows .XXX $\pm$ .005 ANGLES $\pm$ 1° .XX $\pm$ .010 FILLETS .010 .X $\pm$ .020 CORNERS .010 Remove All Burrs and Sharp Edges				MATERIAL		TITLE	
				FINISH		Moving Coil Type Non-Commutated DC Linear Actuator <b>Model # NCC20-18-020-1A</b>	
DRAWN	DATE	APPROVED	DATE	DWG #	REV	SHEET	
JRM	10-8-12	MPW	10-8-12	<b>30-1052</b>	---	1 of 2	

**H2W Technologies, Inc.**  
26470 Ruether Ave #102 Santa Clarita, CA 91350 USA  
Tel: (661) 251-2081 Fax: (661) 251-2067  
www.h2wtech.com

<b>MOVING COIL NON-COMM ACTUATOR SPECIFICATIONS</b>		
Motor P/N	NCC20-18-020-1A	
Stroke	2.00"	50.8 mm
Radial Clearance	0.030" per side	0.76 mm per side
Bearing Type	None Provided	
Moving Mass	0.30 lbs	138 grams
Total Mass	1.55 lbs	705 grams
Resistance @ 20C	3.50 ohms	
Inductance @ 20C	3.70 mH	
Electrical Time Constant	1.05 msec	
Motor Constant	0.75 LBS/SQRT(Watt)	3.34 N/SQRT(Watt)
Force Constant	1.4 LBS/Amp	6.1 N/Amp
Back EMF	0.2 V/ips	6.1 V/m/sec
Continuous Force	2.0 LBS	8.9 N
Max Power @ 100% Duty	7 Watts	
Peak Force	6.0 LBS	26.7 N
Max Power @ 10% Duty	64 Watts	